



---

## Table of Contents

- | [Crowne Plaza Hotel, Christchurch - 29-31 October](#)
- | [Accommodation](#)
- | [Delegate Price](#)
- | [Agenda](#)
- | [Speakers](#)
- | [Alliance Partners](#)
- | [What are you waiting for?](#)

---

## Crowne Plaza Hotel, Christchurch - 29-31 October

Crowne Plaza Christchurch is located in the heart of downtown Christchurch, right opposite the splendid Victoria Square. The hotel is a short walk from major attractions, including the Avon River, Town Hall, Art Gallery, Te Pae Conference Centre and the modern dining and shopping precincts.

With a contemporary style and design, Crowne Plaza Christchurch offers hotel accommodation with global service standards and sweeping views over the city and beyond.

An inhouse Market Place Restaurant and Bar offers quality dining to enhance your stay, or the 1851 Social Bar and Champagne Lounge is the perfect spot to relax in luxury.





---

## Accommodation



**King Standard Room**  
**(prices available from \$325)**

**DELEGATES TO BOOK OWN ACCOMMODATION**



---

# Delegate Price

## Delegate

\$680 + GST

### Includes:

- Conference speakers
- Day catering during retreat days
- Welcome drinks & nibbles
- Dinner on 2nd night
- 6 hrs non verified training

Please book your own flights & accomodation



# Agenda

## Day 1: Tues 29th October



### Day 1 - Tuesday 29 October



9.30 am

Board Meeting

12.30 pm

Tea / Coffee / Snack

1.00 pm

Business Owners Strategy Meeting

2.30 pm

Economic/Market Update - Tony Alexander

3.30 pm

Alliance Partner Introductions

4.30 pm (approx.)

Free time

6.00 pm

Networking drinks & nibbles at The Victoria Pub,  
directly across the road from Crowne Plaza

(afterwards, free time to choose own place for dinner)



Day 2 - Wed 30th October



Day 2 - Wednesday 30 October



8.30 am

How to mitigate your insurance risk  
Steve Wilson GSI

9.00 am

Staff Management  
Natasha Mould - Peninsula / Employsure

10.00 am

Morning Tea

10.30 am

Becoming an Attraction Agency  
Jason Carr - Carr Consultancy

11.30 am

Structuring Businesses for Growth and Retention  
Theo Kyriak - Kyriak Law

12.30 pm

Lunch

1.30 pm

Health & Safety in the Workplace  
Matteo Jones - Peninsula / Employsure

2.30 pm

Business Efficiency

Business Efficiency  
Nick den Heijer / Owen Wong  
Bentleys Accounting

3.30 pm

Afternoon Tea

4.00 pm

REA Case Studies  
Richard Hern - Wynn Williams

5.00 pm

Wrap Up

6.30 pm

Dinner & Auction (offsite)  
Please note taxi vans will be outside the Crowne  
Plaza at 6.15 pm







---

# Speakers

click on the speakers to learn more

Tony Alexander

Steve Wilson

Jason Carr



**Tony Alexander**

Economist



**Steve Wilson**

General Manager - GSI Insurance



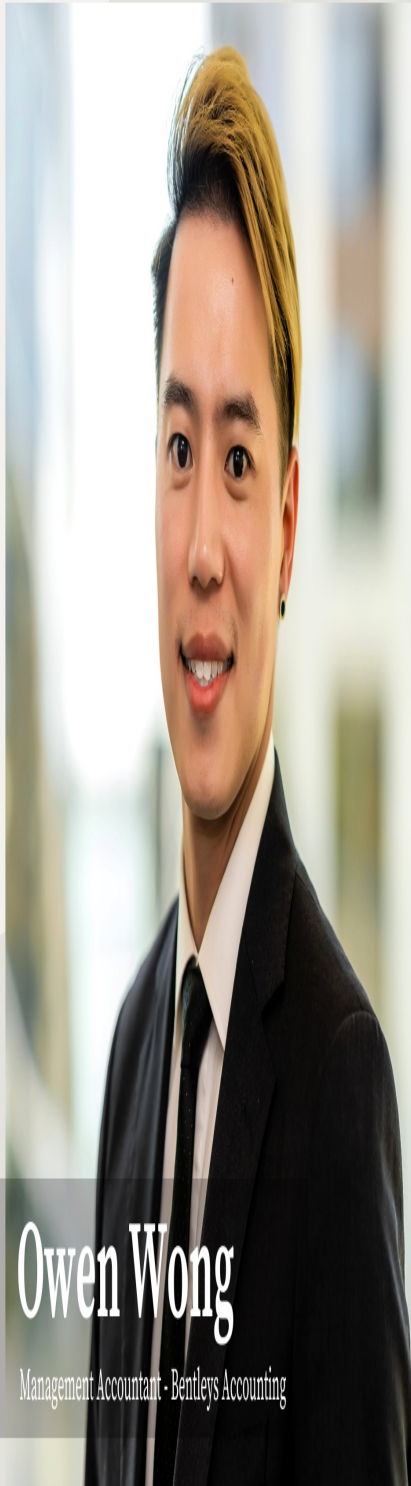
**Jason Carr**

Director - Carr Consulting

Theo Kyriak

Nick Den Heijer





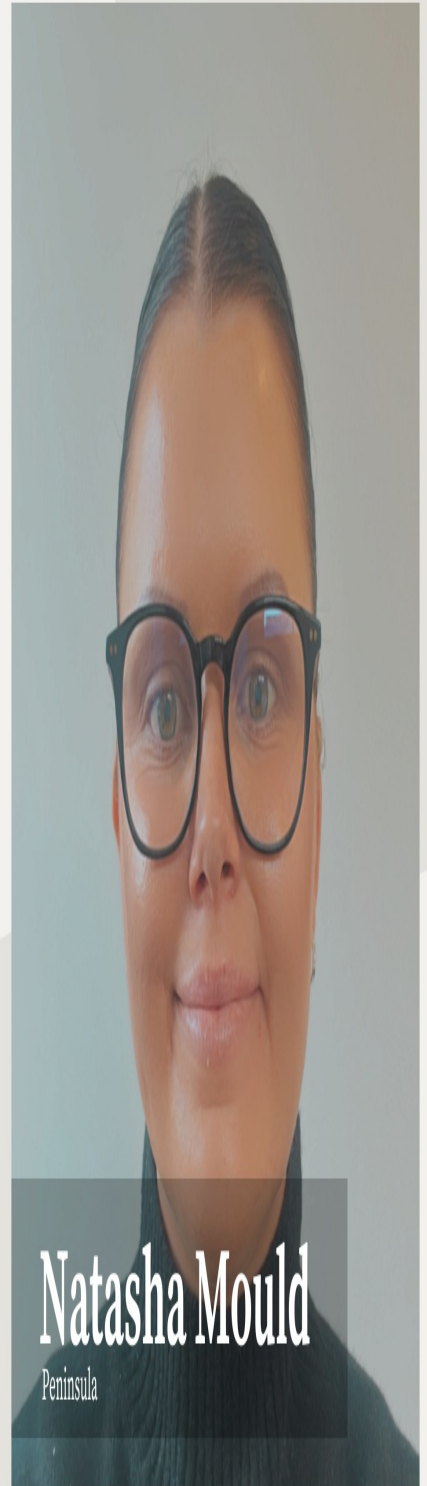
Owen Wong

Management Accountant - Bentleys Accounting



Matteo Jones

Peninsula



Natasha Mould

Peninsula

## Alliance Partners





REAL ESTATE SOFTWARE



CoreLogic®

 **KONNECT**



---

# What are you waiting for?

[Register here](#)